

Northwest Indiana DX CLUB

Volume 12, Issue 8

August 2024

President's Corner

The meeting on July 12th was attended by AG9S, KD9HL, WA9JNO, W9DZ, N4SV, N9RD, KC9OYE and his XYL, and W3ML with his XYL.

Next meeting will be in October.

73
John W3ML
Good DXing!

Meeting Feb. 9th
12:00 Noon
Sugar Bowl Michigan City

"Working the World from the Black Hole"

NWI DX Club Website
<http://nwidxclub.weebly.com/>



Don't forget Steve Mollman is our QSL Card Checker.

DXCC Card Checking is available by appointment and may be available at meetings. E-Mail kd9hl@arrl.net for an appointment or to make other arrangements.

NORTHWEST INDIANA DX CLUB OFFICERS AND STAFF

President	John Poindexter W3ML	w3ml.john@gmail.com
Vice President	Jerry Hess W9KTP	dxer340@gmail.com
Newsletter Editor	John Poindexter W3ML	w3ml.john@gmail.com
W9NWI Trustee	Steve Mollman KD9HL	kd9hl@arrl.net
Webmaster	John Reardon W9YOU	kd9ron@arrl.net
ARRL Card Checker	Steve Mollman KD9HL	kd9hl@arrl.net
DX Alert Coordinator	Bill South N4SV	wbs099@yahoo.com

Reminder, the NWIDX Club has a club call W9NWI.

The call is available to members for use during contests, special events, Field Day, etc. To schedule dates for its use, contact the trustee, Steve Mollman – KD9HL.

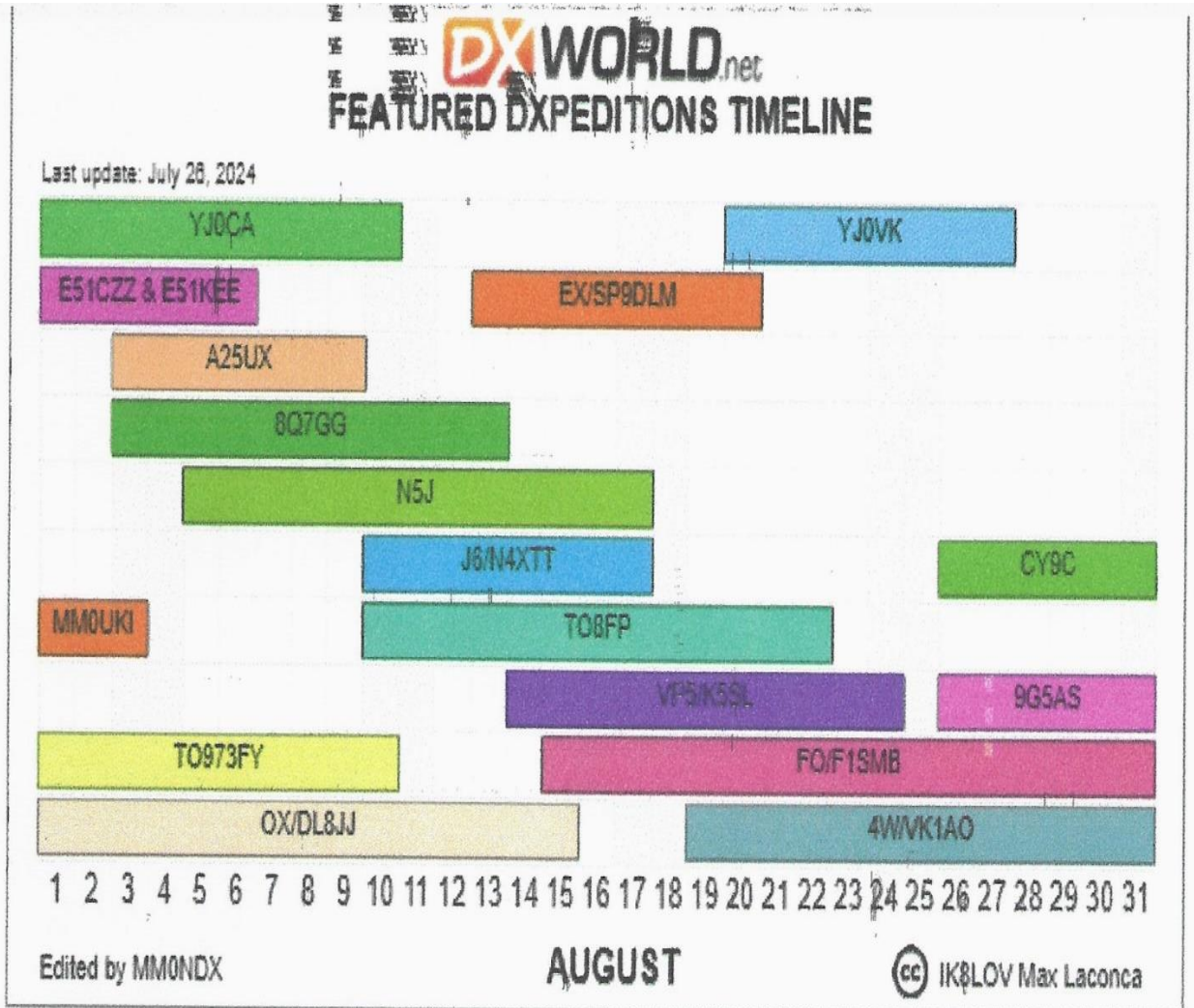
kd9hl@arrl.net

QSL cards are available.

Notice:

Articles in the Northwest Indiana DX Club Newsletter (except for those separately copyrighted) may be reprinted, provided proper credit is given.

DX LISTINGS
FOR
AUGUST 2024
 By
Jerry Hess, W9KTP



Curiosity of <https://www.hamradiotimeline.com/>

Question of the Month

(The correct answer is at the end of the Newsletter)

The upcoming N5J-Jarvis Island DXpedition (August 5-17) will be exclusively using a new form of FT8. What is it called?

- A. Expedition FT8
 - B. Super Fox
 - C. Wiley Fox
 - D. Br'er Fox
-

What HF Bands Should I Use Through 2026?

A Propagation Forecast from Frank Donovan-W3LPL and the Contest University

- Each band has its unique advantages and disadvantages
- 15 and 10 meters provide reliable daytime worldwide propagation from mid-September through May – but not during summer months
- 20 meters provides reliable daytime and nighttime worldwide propagation throughout the year – but not during midday hours during summer months
- 40 meters provides reliable nighttime worldwide propagation throughout the year
- 80 meters often provides good nighttime worldwide propagation from October through April

10 Meter Worldwide Propagation through 2026

- Worldwide propagation improved dramatically since late 2022
 - almost every day from mid-September through April
 - excellent propagation to Europe from sunrise through early afternoon
 - excellent propagation to Japan and Asia after 2130Z sometimes continuing for as long as three or four hours
 - is likely to continue through 2026
- Worldwide sporadic-E propagation between northern hemisphere locations will continue during many days from May through August
 - Sporadic-E is the dominant May to mid-August propagation

15 Meter Worldwide Propagation through 2026

- Worldwide propagation improved dramatically since 2022
 - almost every day from September through May
 - Excellent propagation to Europe from before sunrise to mid-afternoon
 - excellent propagation to Japan and Asia after 2130Z sometimes for four hours or more
- Worldwide propagation between northern hemisphere locations begins later and is shorter in duration from June to August
 - Sporadic-E is sometimes the dominant propagation mode from May through August

20 Meter Worldwide Propagation through 2026

- Nighttime worldwide propagation improved dramatically since 2022
 - almost 24 hours per day worldwide propagation
 - but not during summer mid-day hours
 - excellent nighttime propagation to Europe from 0700-0900Z
 - excellent propagation to Europe resumes before our sunrise
 - DX activity switches to 15 and 10 meters shortly after our sunrise
- Propagation to Japan and east Asia is strongest for three or four hours after 2130Z, somewhat weaker throughout the night then improves for several hours after local sunrise in the USA
- Midday 20 meter DX propagation is always very poor from June through August

40 Meter Worldwide Propagation through 2026

- Worldwide propagation throughout the night became much more reliable and more long lasting since 2022
 - propagation to Europe starts about an hour before sunset
 - continues throughout the night until a few hours after European sunrise when European activity shifts to higher frequency bands
 - the best European propagation and activity is often around European sunrise (0600-0800Z)
- Mid-afternoon propagation to Europe is weaker since 2022
 - most DX activity is still on the higher bands
- Propagation from the east coast to Japan and east Asia is more reliable since 2022 starting at sunset in Japan (0830Z) until about 30 minutes after local sunrise in the USA

80 Meter Worldwide Propagation through 2026

- 80 Meter DX propagation is often of shorter duration since 2022.
 - weak and less reliable DX propagation begins at the USA sunset
 - stronger European propagation usually starts a few hours after local USA sunset.
 - the European activity is often during the hours before their sunrise and continuing until just after European sunrise (0600-0800Z). Most Europeans shift their operating to the higher bands.
- 80 meter worldwide propagation will begin to steadily improve after 2026

160 Meter Worldwide Propagation through 2026

- 160 meter DX propagation is very unreliable since 2022
 - weak unreliable DX propagation begins after sunset
 - propagation to Europe sometimes improves around midnight for just a few hours and sometimes much less
- 160 meter DX propagation will begin to slowly improve after 2026

W3LPL's full presentation at the Contest University can be viewed at:

<https://www.contestuniversity.com/wp-content/uploads/2024/05/Pg-29.-Frank-W3LPL-HF-Propagation-CTU-Compressed.pdf>

Submiyyed by KD9HL

<Ω>

Elkhart East Hamfest/ARRL Central Division Convention

Saturday August 3, 2024 9 AM-2 PM EDT

This year's ARRL Central Division Convention is being held in conjunction with the Elkhart East Hamfest on Saturday August 3, 2024 from 9 AM to 2 PM EDT. The location is the Northern Indiana Event Center, 21565 Executive Parkway, Elkhart, IN 46414 (adjacent to Indiana Toll Road Exit 96-Elkhart East).

As part of the program, Rick Rikoski, - W9ZD, will be making a presentation on DX'ing. For more information: <https://elkharteasthamfest.com/>

<Ω>



2024 ELKHART EAST HAMFEST
SATURDAY AUGUST 3, 2024
9:00 AM - 2:00 PM (ET)

Northern Indiana Event Center
21565 Executive Parkway - Elkhart, IN 46514

More details are available on our website at: <https://www.elkharteasthamfest.com>.

The Northern Indiana Event Center is a state-of-the-art convention facility located at the MH/RV Hall of Fame in Elkhart, Indiana. (Toll Road at Exit 96)

Questions? info@elkharteasthamfest.com

Welcome and Join us!
Indoor 20,000 sq ft of Amateur Radio, Hobby Electronics, and More Convention
125 tables of retail and consumer vendors, HAM Radio license exams all classes
\$8.00 admission comes with discounted admission to the RV Hall of Fame
\$15.00 per table 120v/220v available at no charge
One free admission per vendor / children under 12 free
Talk-in: K9DEW Mishawaka Repeater (147.330+ 131.8 pl)

Additional Reserve Info.
info@elkharteasthamfest.com
Northern Indiana Event Center
21565 Executive Parkway
Elkhart, IN 46514



ARRL Continues Suspension of DXCC Applications



While the Logbook of the World (LoTW) program is now functioning properly, the ARRL is not able to process either DXCC LoTW or paper applications at this time. Neither the conventional DXCC nor Online DXCC application programs are operating. The ARRL has not been able to process any DXCC applications or applications for updates since the middle of May.

VUCC and WAS applications, endorsement stickers, and certificates are being processed.

The list of DXCC Applications Received and DXCC Standings pages continue to be offline.

The ARRL DX staff are unable to provide an expected return to normal operations date.

The DX staff also advises that they currently have a large backlog of applications to complete. It may be quite a while before they can eliminate this backlog.

<Ω>

Setting Up FT-8 for SuperHound

There are now three major FT8 modes in WSJT-X: Normal FT8, Fox/Hound and SuperFox/SuperHound. The upcoming N5J-Jarvis Island DXpedition (August 5-17) will be using the SuperFox/SuperHound mode.

SuperFox mode allows an expedition to make digital QSOs at rates higher than what is possible with previous versions of WSJT-X. In previous versions the Fox would transmit up to 5 streams, with each stream being 50 Hz wide. The more streams the Fox used the weaker his signal.

The SuperFox transmits a full power constant-envelope waveform 1512 Hz wide. The SuperFox may send reports or RR73s to as many as nine SuperHounds simultaneously. Importantly there is

no reduction in received signal strength to do so. A SuperHound will experience the same received signal strength regardless of the number of Hounds being contacted by the SuperFox.

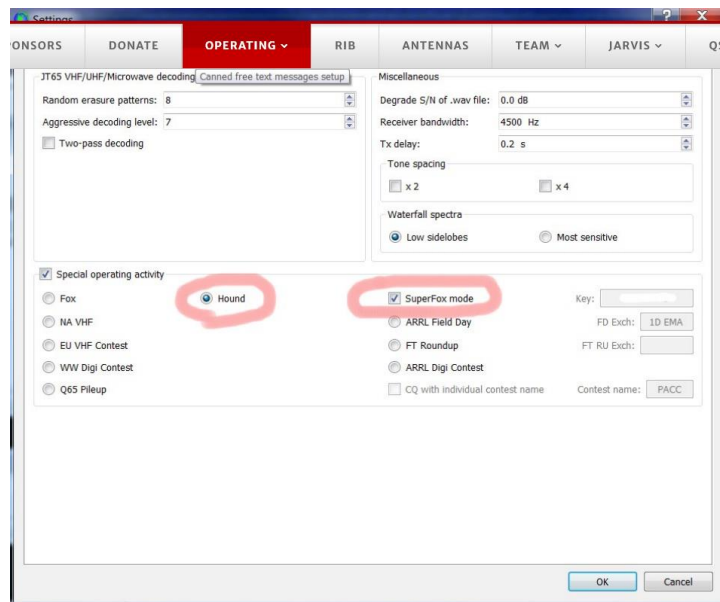
In addition, the SuperFox transmits a digital signature of authenticity. This signature allows the SuperHound to verify the legitimacy of the expedition, thereby reducing or eliminating piracy.

You will need [WSJT-X version 2.7.0-rc6](#) or newer. (This is a beta version; a permanent version is expected soon. WSJT-X version 2.6.1 will not work).

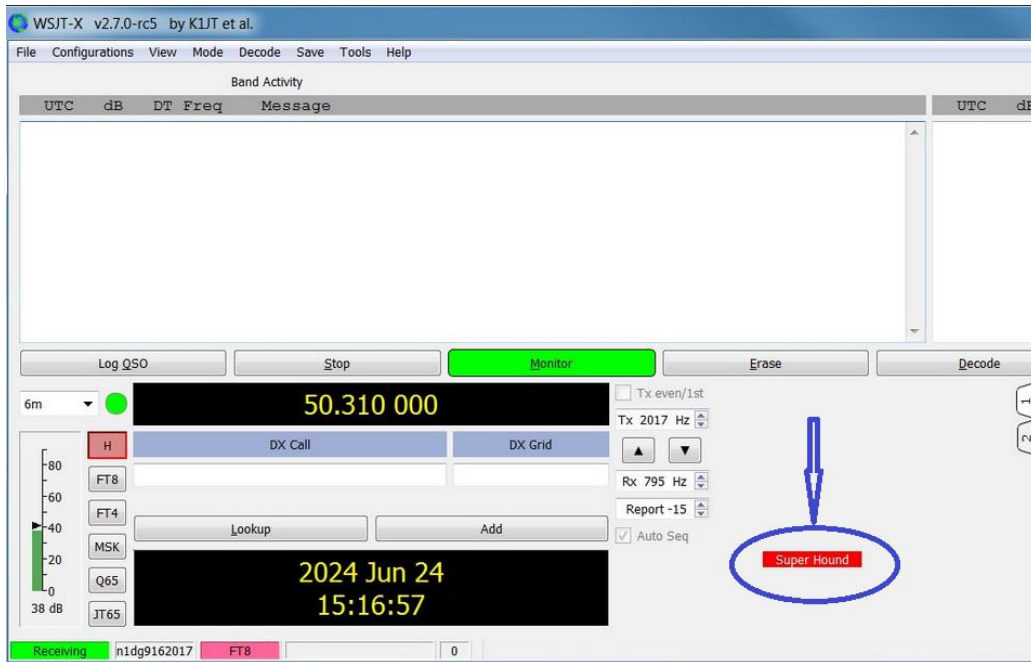
SOFTWARE SETTINGS for SUPER HOUND

Your previous entries in the General-Radio-Audio tabs of “File-Settings” will remain unchanged. Only the Advanced tab has some minor changes.

For the SuperHound: In the Settings—Advanced tab of WSJT-X, select the Hound radio button, and check the SuperFox mode box. No Key setting is needed.



When the “Settings” window is closed a RED SuperHound marker will be displayed in the lower center of the WSJT-X screen.



The previous limitation of Hounds sending above 1000 Hz has been removed. A SuperHound may transmit anywhere from 200 Hz and up. Unlike the old-style Fox and Hound operation, the SuperHound's frequency is not shifted down after being called. You can use the same Split settings as before.

It is up to each DXpedition to define the frequencies to use. Expeditions usually post their desired frequencies on web sites or live via a DX spotting network. SuperFox stations should never transmit on standard FT8 frequencies.

When the QSO is complete, an RR73 message will be received as in previous versions of WSJT-X. If you did not receive RR73 after repeatedly sending your R+report, you can wait a few minutes and call again.

<Ω>

Question of the Month Answer:

The upcoming N5J-Jarvis Island DXpedition (August 5-17) will be exclusively using a new form of FT8. What is it called?

Answer: B. Super Fox

Super Fox is an experimental form of WSJT-X's popular DXpedition Fox/Hound mode. It is billed as allowing an expedition to make digital QSOs at rates higher than possible with previous versions of WSJT-X. In previous versions the Fox would transmit up to 5 streams, with each stream being 50 Hz wide.

The SuperFox transmits a full power constant-envelope waveform 1512 Hz wide. The SuperFox may send reports or RR73s to as many as nine SuperHounds simultaneously. Importantly there is no reduction in received signal strength to do so. A SuperHound will experience the same received signal strength regardless of the number of Hounds being contacted by the SuperFox.

In addition, the SuperFox transmits a digital signature of authenticity. This signature allows the SuperHound to verify the legitimacy of the expedition, thereby reducing or eliminating piracy.

To use SuperFox you will have to install the latest beta WSJT-X program (**WSJT-X 2.7.0-rc6** as of July 25, 2024).

For DX purposes, Jarvis Island counts as Palmyra-Jarvis Islands. It is number 17 on Clublog's "Most Wanted List". It is also a counter for IOTA and POTa.

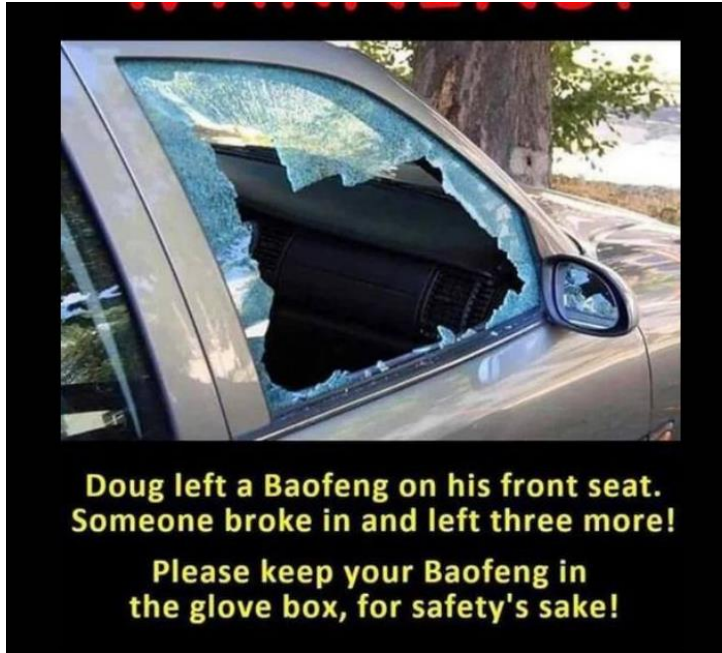
<Ω>

The certificate features a central logo with a green world map and a red shield containing the letters 'CQ'. The shield is flanked by decorative flourishes. Below the logo, the text reads: 'The Radio Amateur's Journal Takes pleasure in awarding this Certificate of Merit to N4SV Operator: WBS'. The main title is 'World Wide 160 Meter DX Contest' in red, followed by '#1 Indiana Single Operator Assisted High Power'. A paragraph states: 'A Total score of 32,614 points was computed on the basis of the number of stations worked and call sign prefixes contacted. In witness of this achievement, we hereby affix our signatures on this day.' Two signatures are present: Andrew Blal NDNT (CQ 160 Meter Contest Director) and J. W. [unclear] W2VU (Editor, CQ).

Another member achieve notice on 160 m.

**NWIDX Club Lunch/Meeting
July 12, 2024
Sugar Bowl-Michigan City**





**Doug left a Baofeng on his front seat.
Someone broke in and left three more!**

**Please keep your Baofeng in
the glove box, for safety's sake!**

FOR SELL ITEMS

FREE Astron LS-10A 28 VOLT DC POWER SUPPLY. No shipping. Power Supply Weight: 18.00 lbs. Contact John, W3ML



For Sale, Cushcraft A3S tri-band HF yagi, 10, 15 and 20 meters, with the 30/40 meter add-on.

This antenna is just over 2 years old. It worked fine for me, but I soon realized I needed coverage for more bands (WARC) so I replaced it with a new 5 band yagi. This A3S is in great shape and the price is very good. Look up this antenna now and it is \$799 at DX Engineering for the basic tri-band antenna only, add the A-743 30/40 meter add on and that's an additional \$349, that's \$1200 today, plus you have to pay for shipping and tax, likely closer to \$1400 when all is said and done. My price to you, less than half that at \$600, and I'll deliver no charge within the NWI region, or you can pick up in La Porte, IN. Its a great tri-band, or 5 band when you add the 30/40 meter add-on. Contact me if interested, Bill, N4SV, wbs099@yahoo.com.

This is an old style XR5 not the JK Antenna version.

18 ft boom

5, 2 el interlaced antennas for 20, 17, 15, 12 and 10m.

One feed line

approximately 8 Sq Ft of wind load

A new piece of Romex is recommended to connect the feed from the 20m driven to the 12m driven. I have the old one if you want to put a lug back on one of the wires but since the lug came off use at your own risk.

I have a Balun Designs balun that will be included. Antenna is broke down by elements and bundled together. I think it weighs 50 lbs (don't quote me)

I have the manual and it is included. You may need a couple of U-bolts for the mast to book assembly. (unless I can remember where I put them) The element U-bolts were all replaced with stainless.

asking \$400 pick-up in Marion, IN

Contact: Mike Kasrich aj9c@indy.rr.com

If you have ham items for sale, email me a list along with prices and contact information. I will put it in the next newsletter.

Let me know when an item is no longer for sale so I can remove it. For Sale items will be removed from the newsletter after 3 months.

I want to thank those that have been sending in articles for the newsletter. All items are appreciated.



Until Next Time,

73

John

W3ML

President Northwest Indiana DX Club

<http://nwidclub.weebly.com/>



DX

