

# Northwest Indiana DX CLUB

Volume 8, Issue 4

April 2020

## President's Corner

**Hello everyone,**

**I hope all are well and not suffering from the virus. Great time to work radio.**

**Please be safe and stay well.**

**I have no idea when we will meet again, but it won't be until it is safe for us to do so.**

73

John W3ML

Good DXing!

## NWI DX Club Website

<http://nwidxclub.weebly.com/>



**Don't forget Steve is our new QSL Card Checker.**

DXCC Card Checking is available by appointment and may be available at meetings. E-Mail [kd9hl@arrl.net](mailto:kd9hl@arrl.net) for an appointment or to make other arrangements.

## INSIDE THIS ISSUE

- 1 President Speaks
- 2- Member News/DX News

**Reminder, the NWIDX Club has a club call W9NWI.**

The call is available to members for use during contests, special events, Field Day, etc. To schedule dates for its use, contact the trustee, Steve Mollman – KD9HL. [kd9hl@arrl.net](mailto:kd9hl@arrl.net)

QSL cards are available.

## **Notice:**

**Articles in the Northwest Indiana DX Club Newsletter (except for those separately copyrighted) may be reprinted, provided proper credit is given.**

---

# **Handy Hint<sup>®</sup>**

## **Bending Resistor Leads to fit PC Boards**

**By James W. Bennett-KA5DVS**

When you first start building, you wonder why your attempts look so bad, and the master builders make it look so neat. The secret is to learn how they do things. I did it by asking. Jim Cates, WA6GER (SK) showed me a neat little trick a long time ago. You can use a circuit board as a bending gage for resistors if they use standard 0.4" spacing between the leads. It makes it look really nice, and every resistor will fit the board perfectly. It is easier to show you than tell you so let's get started.

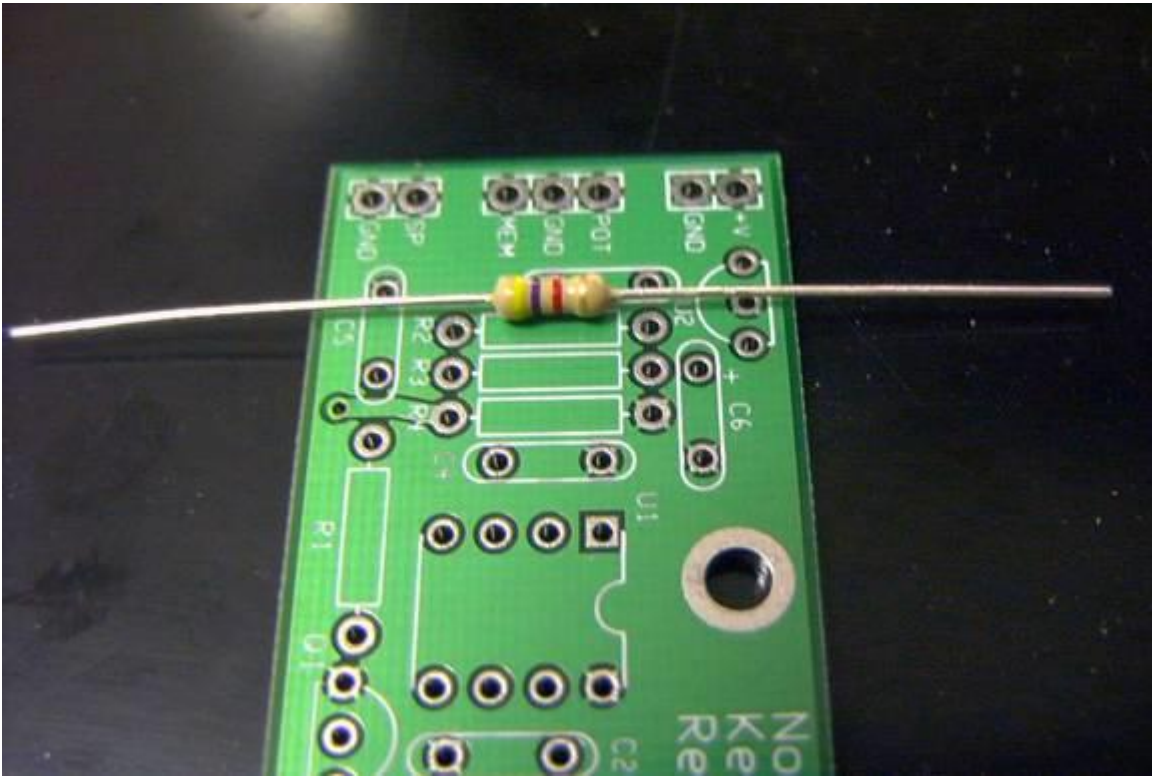


Fig. 1 - Resistor shown laying on board with 0.4" hole spacing.

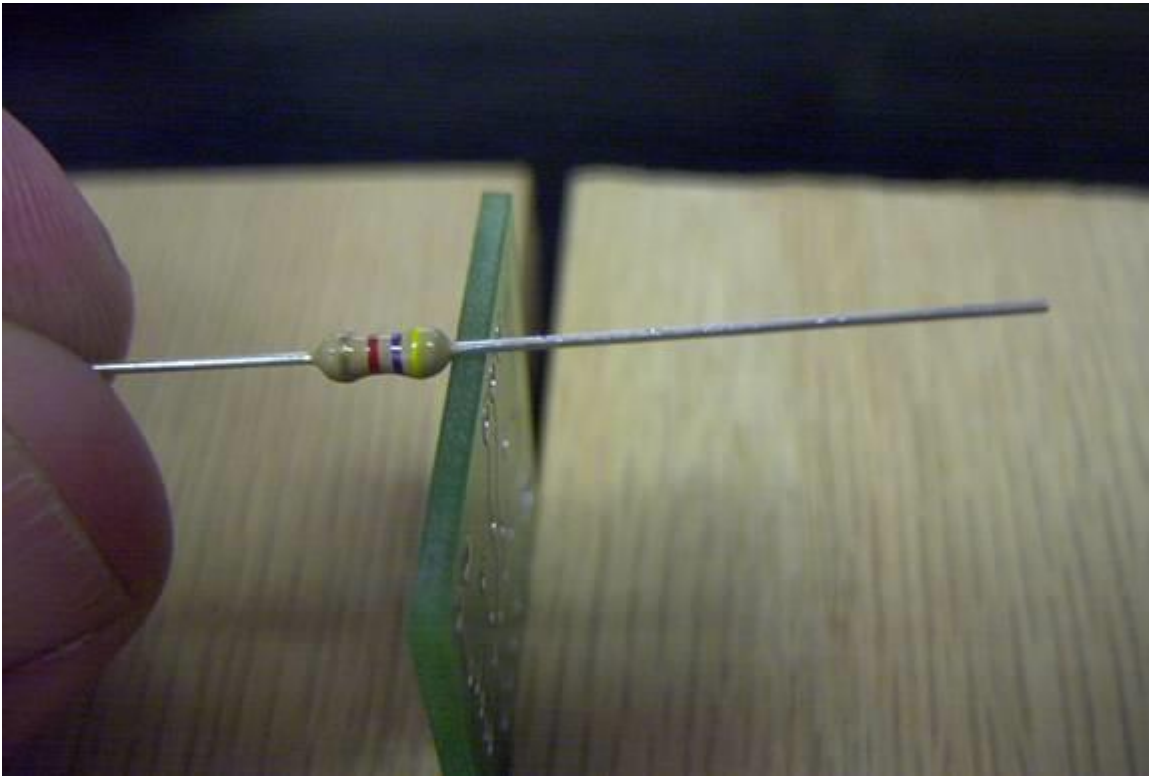


Fig. 2 - Resistor being held over the edge of the board prior to bending. Note that the edge of the resistor is right against the edge of the board. This is important.

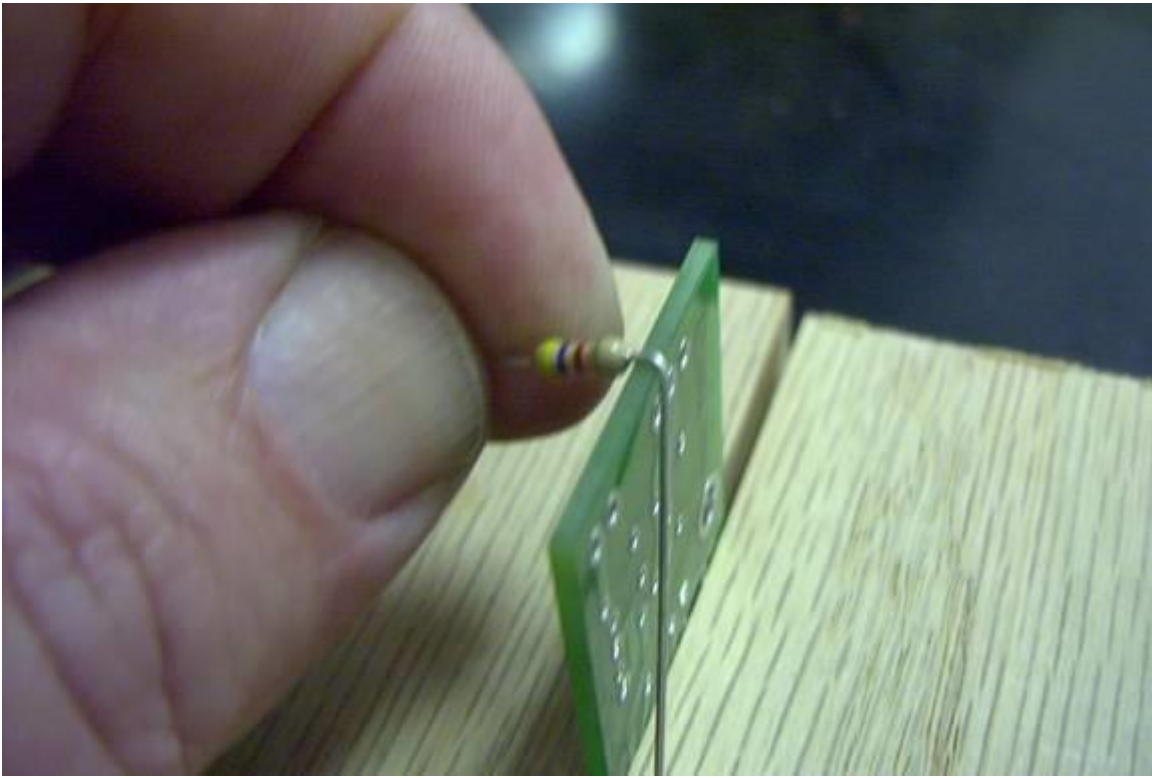


Fig. 3 - Resistor after first lead is bent over edge of board.

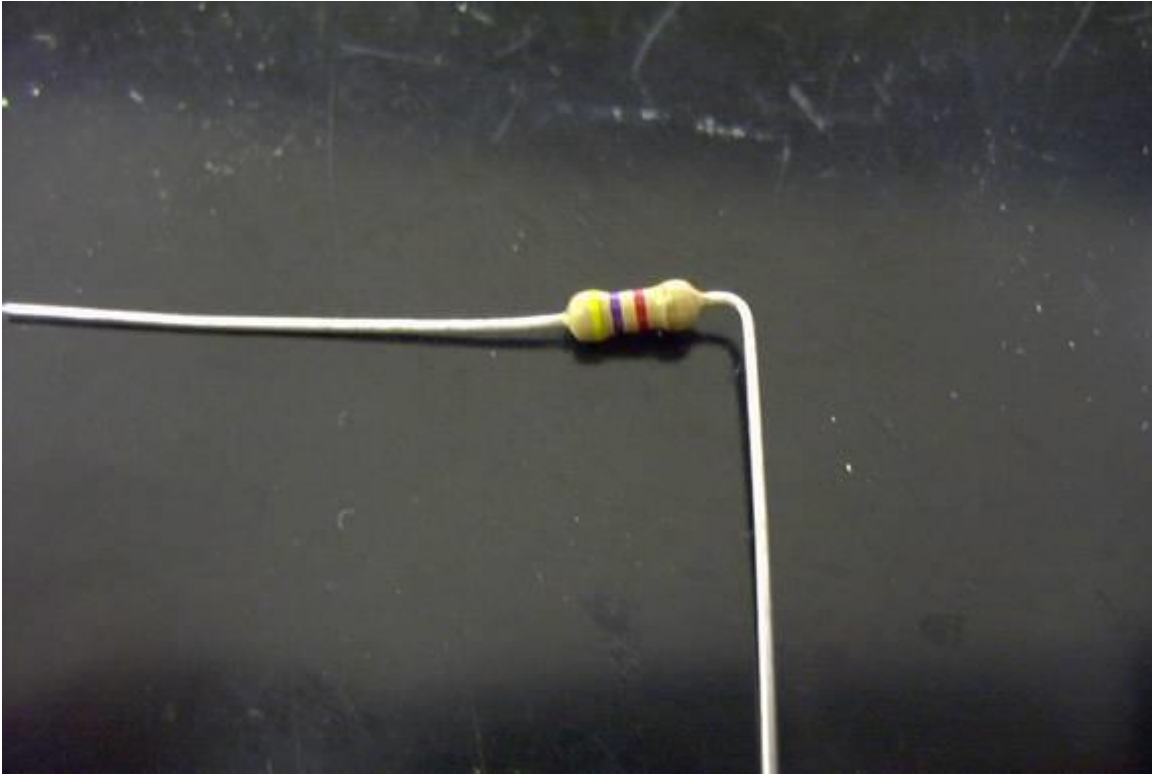


Fig. 4 - Resistor with 1 lead bent. Now you are ready to repeat the bending process with the other lead.

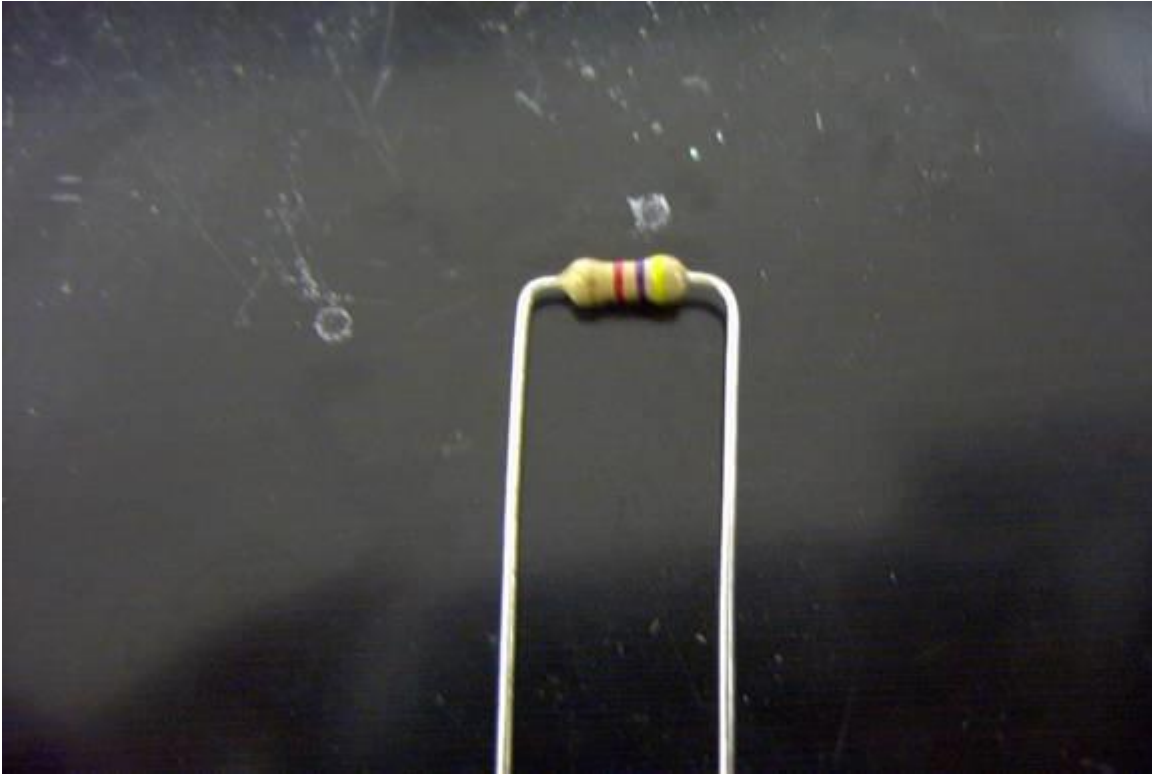


Fig. 5 - Resistor with both leads bent. Ready for insertion into the board.

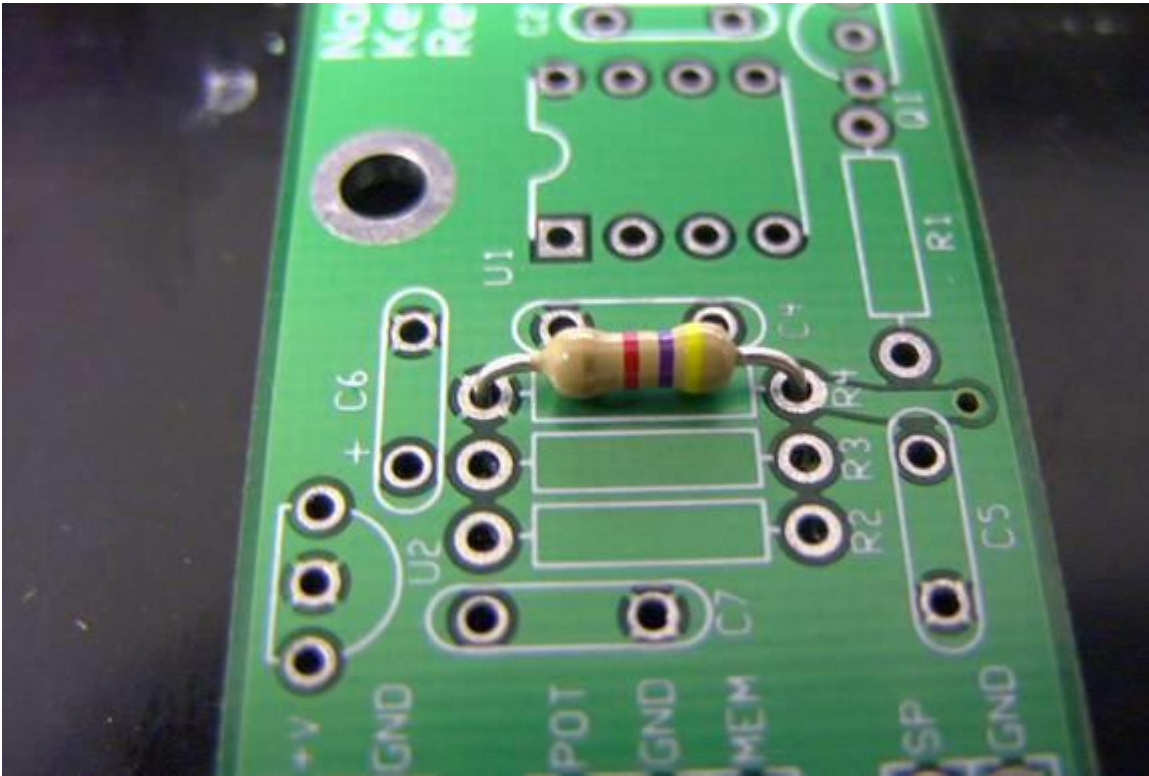


Fig. 6 - Resistor in place ready to solder. Notice how nicely it fits? You can do it too! You will be amazed when you find out how easily it is done. I usually bend the leads on the back side of the board at a 45 degree angle to hold the resistor in place so that it doesn't fall out when I turn the board over to solder. ©

*This copywrited article is printed with the kind permission of James Bennett-KA5DVS and Pacific Antennas/QRPKits.com. QRPKits.com manufactures a wide variety of kits for ham radio including test equipment, transmitters, receivers and antennas. Their web address is: <http://www.qrpkits.com/>*



# COMPARISON OF THREE LNA PRE-AMPS

## PART 1

BY

Jerry Hess, W9KTP

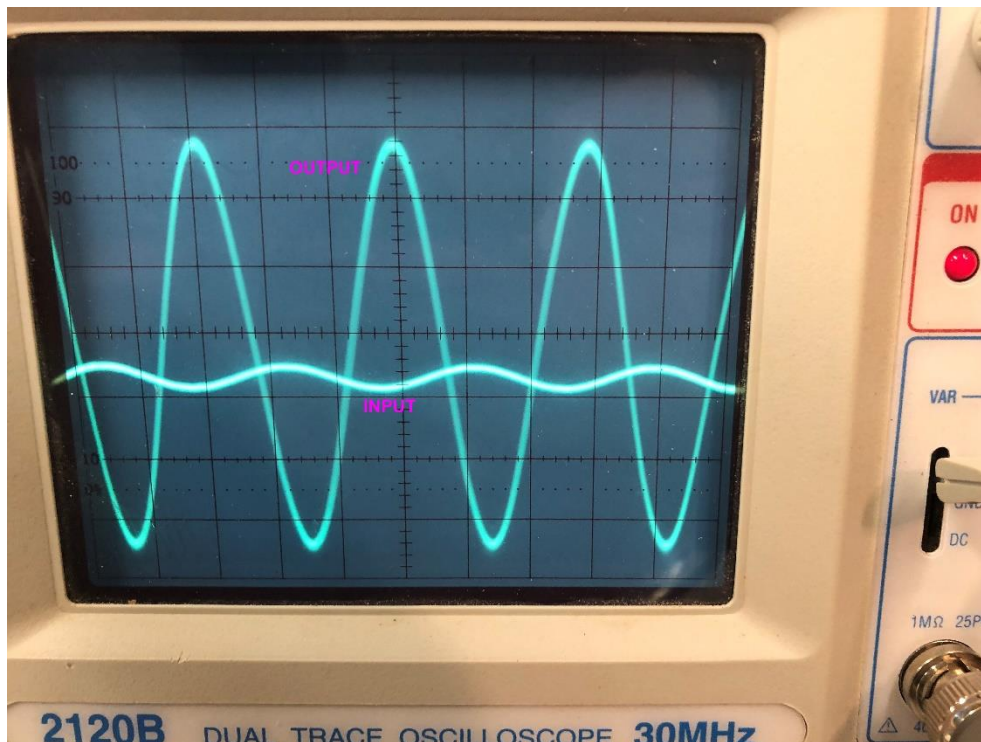
For anyone interested in working DX on 80 or 160 meters, improving the received signal is an important factor. Beverage and rhombic antennas are great but very few hams have the space for such antennas. Another consideration is a Low Noise Pre-Amplifier. I've put together three of them with the intent of measuring their capabilities. I chose the following units: first is the SV1AGN unit which comes pre-assembled for around \$40 and is based on push-pull J310 JFETS (Note 1). It is broad banded. The second is a circuit designed by ARRL's Doug DeMaw, W1FB (SK). It consists of a MPF102 FET followed by a MC1350P RF/Video amplifier. It is designed for 80 and 160 meters (Note 2). An etched circuit board is available from FAR Circuits (Note 3). The last unit was designed by Phil Atchley, KO6BB and consists of a J310 JFET followed by a 2N5109 CATV transistor (Note 4). By selecting a toroid for the input tuned circuit, I was able to set the unit for 160 and 80 meters. The circuit is mounted on a 3" x 1 3/4" corner of a protoboard (Note 5). The three units are shown in the picture below. Left to right are the KO6BB, SV1AFN and W1FB units.



My first step was to bench test each Pre-Amp with my function generator and oscilloscope. My equipment is hardly lab precision but it does give respectable, repeatable results. The generator was set for 0.01 volts or 10 millivolts and then either 3.530 MHz or 1.830 MHz. I converted the voltage readings from voltage to decibels with the following formula.

$$\text{dB} = 20 \text{ Log } (V \text{ out} / V \text{ in})$$

For example, the KO6BB unit showed .148 volts on the scope set at 0.02 volts per division on 80 meters. That resulted in  $23.4 \text{ dB} = 20 \text{ Log} (.148/.01)$  . This gain is more impressive as seen in the photo of the scope traces.



The following table summarizes my results.

UNIT	80 M dB	160 M dB
W1FB	38.5	38.0
KO6BB	23.4	22.9
SV1AFN	10.3	10.3

The output signal distorts on the W1FB unit when the gain was at maximum and a later test with the station receiver showed maximum gain did not increase the signal. Also keep in mind the SV1AFN Pre-Amp is broad banded so I didn't expect the gain to be as high as the others. It may prove to be very good at handling noise level.

It is important to note that these gains do not imply that "on the air" improvement will result. My next effort will be to determine how much each Pre-Amp improves the signal above the noise level. I plan to record the noise level (pre-amp on and off) and then a signal + noise level (pre-amp on and off) and calculate the improvement. All of this is depended on my technical abilities and equipment limitations.

Preliminary results seemed to show some gain perhaps 2-3 dB. It's going take some time to gather and analyze the data. Hopefully I will have results by next month in a "Part Two" of this article. See you then.

73's,

Jerry Hess, W9KTP

jerryhess@frontier.com

Note 1: SV1AGN's unit is found at [https://www.ebay.com/itm/J310-push-pull-HF-pre-amp-KIT-BUILT-TESTED/152067780927?\\_trksid=p2047675.c100005.m1851&\\_trkparms=aid%3D222007%26algo%3DSIC.MBE%26ao%3D1%26asc%3D39861%26meid%3Dd3fdc29cad1644da849fa0f2b6f48be3%26pid%3D100005%26rk%3D1%26rkt%3D6%26sd%3D151847476701](https://www.ebay.com/itm/J310-push-pull-HF-pre-amp-KIT-BUILT-TESTED/152067780927?_trksid=p2047675.c100005.m1851&_trkparms=aid%3D222007%26algo%3DSIC.MBE%26ao%3D1%26asc%3D39861%26meid%3Dd3fdc29cad1644da849fa0f2b6f48be3%26pid%3D100005%26rk%3D1%26rkt%3D6%26sd%3D151847476701)

Note 2: W1FB's unit is found in August 1988 QST page 22

Note 3: <http://www.farcircuits.net/> Page down to Pre-Amplifiers and look for "QST AUG88" at the price of \$4.50 plus \$3.50 shipping.

Note 4: <https://www.qsl.net/ko6bb/lf-preamp-2.html>

Note 5: Mouser Part # 574-8001, Manufacturer - Vector 8001, 6.5" x 4.5" x .062" board. Jameco also has similar boards and you may want a smaller one if you are only making a single pre-amp. For anyone looking to build this unit I would be glad to share my board layout. Just send me an Email.

## **DX LISTINGS FOR APRIL 2020**

Listings from NG3K were minor and perhaps as the result of the coronavirus. Instead I have included the entire weekly listing from the ARRL. I've also included the ARRL "Contest Corral" listings for April since most of us are 'home bound' due to the virus. Take a look down the listing and give contesting a try during the next several weeks. Have some fun and enjoy that radio.  
73's,  
Jerry, W9KTP

This week's bulletin was made possible with information provided by The Daily DX, the OPDX Bulletin, 425 DX News, DXNL, Contest Corral from QST and the ARRL Contest Calendar and WA7BNM web sites. Thanks to all.

TURKEY, TC10. Members of the Turkish Radio Amateur Club are QRV from special event station TC105GL until March 30. Activity is to commemorate the Gallipoli campaign of World War I. Activity will be on various HF bands using CW and SSB. QSL via the info on QRZ.com.

CAPE VERDE, D4. Max, IZ4DPV is active as D4F from Sao Vicente Island (AF-086) until March 31. Activity has been on the lower bands using SSB. Look for him also in the CQ WW WPX SSB Contest. QSL via home call.

ALASKA, KL7. Members of the Russian Robinson Club are planning an activation of Kiska Island (NA-070) from June 17 to 19 as KL7RRC/p. They will be taking two rigs for CW, SSB and FT8. QSL via N7RO.

EGYPT, SU. Tom, DL2RMC is QRV as SU9TH on 40, 20, 15 and 10 meters using FT8, FT4, CW and SSB. He will be in the country until the end of April. QSL via DL2RMC, ClubLog or LoTW.

VANUATU, YJ. Chris, VK2NYA/VK2YUS will be active as YJ0CA from Port Vila, Efate Island (OC-035), until April 1. Activity is 40, 20 and 15 meters and possibly 10 meters, using SSB only. He also plans to be in the CQ WW WPX SSB Contest as a Single-Op entry. QSL direct via home call.

BRAZIL, ZZ4. Members of the Serra Lopo DX Team will be active as ZZ4A during the CQ WW WPX SSB Contest as a Multi-Single entry. QSL via PY2RMZ.

OMAN, A4. A42K will be QRV in the CQ WW WPX SSB Contest. QSL via EA5GL or LoTW.

CUBA, CO. Members of the SMP DX Club will be QRV as T42DX until March 30 on 80 to 10 meters using CW, SSB, RTTY, FT8 and FT4, including and entry in the CQ WW WPX SSB Contest. QSL via CO2AME.

SCOTLAND, GS0. Members of the Scarlett Point Club are active as GS0SP. Their length of stay is unknown. QSL via LoTW only.

ETHIOPIA, ET. Ken, K4ZW will be QRV as ET3AA starting March 27 for one week, pending successful flight arrangements.

MARTINIQUE, FM. Laurent, FM5BH will be active in the CQ WW WPX SSB Contest on all bands. QSL via W3HNC or LoTW. Also, Miguel, EA1BP will be active as TO7BP during the CQ WW WPX SSB Contest. Outside of contest he will be signing FM/EA1BP on various HF bands. QSL to home call via the Bureau.

EASTER ISLAND, XR0. A Polish team will be active as XR0YSP from September 15 to 30. Operators include Jan, SP3CYY, Jurek, SP3GEM, Wlodek, SP6EQZ, Janusz, SP6IXF, Roman, SP9FOW and Piotr, SP9RCL. Activity will be on 160 to 10 meters using CW, SSB and FT8. QSL via SP6IXF, ClubLog's OQRS, LoTW or via the Bureau.

THE NETHERLANDS, PA75. Operators Harm, PA0HPG, Michel, PA0VCC, Ad, PA2PCH, Nico, PA3ADU, Gerrie, PA7TT, Harm, PD0GIB, Bert, PD2B and Gerard, PD2VW will activate special event station PA75ASN from April 1 to May 7 to commemorate the 75th anniversary of the liberation of Assen City. Operations will be on 80, 60, 40, 30, 20, 17 and 15 meters using CW, SSB and FT8/FT4. QSL via PA0VCC, direct or by the Bureau.

LUXEMBOURG, LX. The LX7I team celebrates its 20th anniversary with the call sign LX20I during the CQ WW WPX SSB Contest. QSL via LX2A.

CZECH REPUBLIC, OK. The Czechoslovak DX Club celebrates its 30th anniversary on the air as OL30DXC until the end of the year. QSL via OK2PXJ.

THIS WEEKEND ON THE RADIO. The CQ WW WPX SSB Contest, FOC QSO Party and QCX Challenge are on tap for this weekend. The QRP Fox Hunt, Phone Fray, CWops Mini-CWT Test and UKEICC 80 Meter Contest are all on April 1. Please see March QST, page 79, and the ARRL and WA7BNM Contest Web Sites for details.

Bruce Draper, AA5B, aa5b.corral@gmail.com

## Contest Corral

## April 2020

Check for updates and a downloadable PDF version online at [www.arrl.org/contest-calendar](http://www.arrl.org/contest-calendar).

Refer to the contest websites for full rules, scoring information, operating periods or time limits, and log submission information.

Start - Finish		Bands	Contest Name	Mode	Exchange	Sponsor's Website
Date-Time	Date-Time					
1	2000 1	2100	3.5	UKEICC 80-Meter Contest	Ph	4-char grid square <a href="http://ukeicc.com/80m-rules.php">ukeicc.com/80m-rules.php</a>
2	1700 2	2000	3.5	SARL 80-Meter QSO Party	Ph	RS, serial, grid locator <a href="http://www.sarl.org.za">www.sarl.org.za</a>
2	1700 2	2100	28	NRAU 10-Meter Activity Contest	CW Ph Dig	RS(T), 6-char grid square <a href="http://nrau.net/activity-contests">nrau.net/activity-contests</a>
2	2000 2	2200	1.8-50	SKCC Sprint Europe	CW	RST, SPC, name, mbr or power <a href="http://www.skccgroup.com">www.skccgroup.com</a>
4	0400 4	0800	7	LZ Open 40-Meter Sprint	CW	Serial, serial received from last <a href="http://www.lzopen.com/lzocc40">www.lzopen.com/lzocc40</a>

					Contest			QSO	
4	1000	5	0400	14	PODXS 070 Club PSK 31 Flavors Contest	Dig		SPC, mbr or name	<a href="http://www.podxs070.com">www.podxs070.com</a>
4	1300	5	0100	1.8- UHF	Nebraska QSO Party	CW Dig	Ph	County or SPC (grid square on FT8)	<a href="http://www.arrl.org/sections/view/nebraska">www.arrl.org/sections/view/nebraska</a>
4	1400	5	0200	1.8-144	Louisiana QSO Party	CW Dig	Ph	RS(T), Parish or SPC	<a href="http://laqp.louisianacontestclub.org">laqp.louisianacontestclub.org</a>
4	1400	5	0200	3.5- UHF	Mississippi QSO Party	CW Dig	Ph	RS(T), county or SPC	<a href="http://www.arrlmiss.org">www.arrlmiss.org</a>
4	1400	5	2000	1.8- UHF	Missouri QSO Party	CW Dig	Ph	RS(T), county or SPC	<a href="http://w0ma.org/index.php/missouri-qso-party">w0ma.org/index.php/ missouri-qso-party</a>
4	1400	5	2200	3.5-28	Florida State Parks on the Air	CW Dig	Ph	Park ID or SPC	<a href="http://flspota.org/rules">flspota.org/rules</a>
4	1500	5	1500	1.8-28	SP DX Contest	CW	Ph	RS(T), Province or serial	<a href="http://spdxcontest.pzk.org.pl">spdxcontest.pzk.org.pl</a>
4	1600	5	1600	3.5-28	EA RTTY Contest	Dig		RSQ, EA province or serial	<a href="http://concurso.ure.es/en/earthy/bases">concurso.ure.es/en/earthy/bases</a>
5	0000	5	0400	3.5-14	North American SSB Sprint Contest	Ph		Other station's call, your call, serial, name, SPC	<a href="http://ssbsprint.com/rules">ssbsprint.com/rules</a>
5	0600	5	1000	50	UBA Spring Contest, 6 Meters	CW	Ph	RS(T), serial, UBA Section (if ON)	<a href="http://uba.be/hf/contest-rules">uba.be/hf/contest-rules</a>
5	1900	5	2030	3.5	RSGB RoLo SSB	Ph		RS, previous 6-char grid square received	<a href="http://www.rsgbcc.org/hf">www.rsgbcc.org/hf</a>
6	0800	12	2000	All	IQRP Quarterly Marathon	CW Dig	Ph	RS(T)	<a href="http://www.arimontebelluna.it">www.arimontebelluna.it</a>
6	1900	6	2030	3.5	RSGB 80-Meter Club Championship, CW	CW		RST, serial	<a href="http://www.rsgbcc.org/hf">www.rsgbcc.org/hf</a>
6	1900	6	2300	144	144 MHz Spring Sprint	CW Dig	Ph	4-char grid square	<a href="http://sites.google.com/site/springvhfupsprints">sites.google.com/site/ springvhfupsprints</a>
7	0100	7	0300	3.5-28	ARS Spartan Sprint	CW		RST, SPC, power	<a href="http://arsqrp.blogspot.com">arsqrp.blogspot.com</a>
11	0000	11	2359	1.8-28	QRP ARCI Spring QSO Party	CW		RS, SPC, mbr or power	<a href="http://qrparci.org/contests">qrparci.org/contests</a>
11	0700	12	1300	1.8-28	JIDX CW Contest	CW		RST, Prefecture number or CQ zone	<a href="http://jidx.org/jidxrule-e.html">jidx.org/jidxrule-e.html</a>
11	1200	12	1200	1.8-28	OK/OM DX Contest, SSB	Ph		RS, 3-letter OK/OM county code or serial	<a href="http://okomdx.crk.cz">okomdx.crk.cz</a>
11	1200	12	1200	3.5-28, 144	F9AA Cup, PSK	Dig		RST, serial	<a href="http://www.site.urc.asso.fr">www.site.urc.asso.fr</a>
11	1200	12	1200	3.5-28	FTn DX Contest	Dig		RST, US state or VE province or serial	<a href="http://europeanft8club.wordpress.com">europeanft8club.wordpress.com</a>
11	1200	12	2359	1.8-50	SKCC Weekend Sprintathon	CW		RST, SPC, name, mbr or "none"	<a href="http://www.skccgroup.com">www.skccgroup.com</a>
11	1400	12	0200	1.8-50	New Mexico QSO Party	CW Dig	Ph	Name, county or SPC	<a href="http://www.newmexicoqsoparty.org">www.newmexicoqsoparty.org</a>
11	1800	12	1800	1.8-144	North Dakota QSO Party	CW	Ph	RS(T), county or SPC	<a href="http://ndarrlsec.com">ndarrlsec.com</a>
11	1800	12	2359	1.8-50	Georgia QSO Party	CW	Ph	RST, county or SPC	<a href="http://www.georgiaqsoparty.org">www.georgiaqsoparty.org</a>
11	2100	12	2100	1.8-28, satellites	Yuri Gagarin International DX Contest	CW		RST, ITU zone	<a href="http://gc.qst.ru/en/section/32">gc.qst.ru/en/section/32</a>
12	1000	12	2200	3.5-14	WAB 3.5/7/14 MHz Data Modes	Dig		RS, serial, WAB square or country	<a href="http://wab.intermip.net/Contests.php">wab.intermip.net/Contests.php</a>
12	1200	12	1800	3.5-7	International Vintage Contest HF	CW	Ph	RS(T) 4-char grid square	<a href="http://contestvintage.beepworld.it">contestvintage.beepworld.it</a>
12	1500	12	1600	3.5	Hungarian Straight Key Contest	CW		RST, serial, power code	<a href="http://hskc.ha8kux.com">hskc.ha8kux.com</a>
13	0000	13	0200	1.8-28	4 States QRP Group Second Sunday Sprint	CW	Ph	RS(T), SPC, mbr or power	<a href="http://www.4sqrp.com">www.4sqrp.com</a>
14	1900	14	2300	222	222 MHz Spring Sprint	CW Dig	Ph	4-char grid square	<a href="http://sites.google.com/site/springvhfupsprints">sites.google.com/site/ springvhfupsprints</a>
15	0030	15	0230	3.5-14	NAQCC CW Sprint	CW		RST, SPC, mbr or power	<a href="http://naqcc.info">naqcc.info</a>
15	1900	15	2030	3.5	RSGB 80-Meter Club Championship, SSB	Ph		RS, serial	<a href="http://www.rsgbcc.org/hf">www.rsgbcc.org/hf</a>
17	2100	18	2100	1.8-28	Holyland DX Contest	CW Dig	Ph	RS(T), 4X area or serial	<a href="http://iarc.org/iarc/#HolylandContest">iarc.org/iarc/#HolylandContest</a>
18	0500	18	0859	3.5-7	ES Open HF Championship	CW	Ph	RS(T), serial	<a href="http://erau.ee/en/es-open-contests">erau.ee/en/es-open-contests</a>
18	0600	19	0559	3.5-28	Worked All Provinces of China DX Contest	CW	Ph	RS(T), BY province or serial	<a href="http://www.mulandxc.org">www.mulandxc.org</a>
18	0700	19	0659	3.5-28	YU DX Contest	CW	Ph	RS(T), YU/YT county or serial	<a href="http://www.yudx.yu1srs.org.rs">www.yudx.yu1srs.org.rs</a>
18	0800	18	1800	3.5-21	QRP to the Field	CW	Ph	RST, SPC, name or SOTA	<a href="http://www.zianet.com/qrp/qrpptf">www.zianet.com/qrp/qrpptf</a>
18	0900	19	2359	3.5-28	CQMM DX Contest	CW		RST, continent, category code	<a href="http://www.cqmmdx.com/rules">www.cqmmdx.com/rules</a>
18	1400	19	2000	All	Texas State Parks on the Air	CW Dig	Ph	RS(T), park or SPC	<a href="http://www.tspota.org/rules">www.tspota.org/rules</a>

18	1600	19	0400	3.5-28	Michigan QSO Party	CW Ph	Serial, county or SPC	<a href="http://www.miqp.org/Rules.htm">www.miqp.org/Rules.htm</a>
18	1700	19	1300	3.5-28	EA-QRP CW Contest	CW	RST, category code	<a href="http://www.eaqrp.com">www.eaqrp.com</a>
18	1800	18	2159	1.8-50	Feld Hell Sprint	Dig	RST, mbr, SPC, grid	<a href="http://sites.google.com/site/feldhellclub">sites.google.com/site/feldhellclub</a>
18	1800	19	1800	1.8-144	Ontario QSO Party	CW Ph	RS(T), ON county or SPC	<a href="http://va3cco.com/oqp/rules.htm">va3cco.com/oqp/rules.htm</a>
19	1800	19	2359	3.5-28	ARRL Rookie Roundup, SSB	Ph	Name, 2-digit year first licensed, state/province/XE area/DX	<a href="http://www.arrl.org/rookie-roundup">www.arrl.org/rookie-roundup</a>
20	0100	20	0300	1.8-28	Run for the Bacon QRP Contest	CW	RST, SPC, mbr/power	<a href="http://qrpcontest.com/pigrun">qrpcontest.com/pigrun</a>
22	0000	22	0200	1.8-28	SKCC Sprint	CW	RST, SPC, name, mbr or power	<a href="http://www.skccgroup.com">www.skccgroup.com</a>
22	1900	22	2300	432	432 MHz Spring Sprint	CW Ph Dig	4-char grid square	<a href="http://sites.google.com/site/springvhfupsprints">sites.google.com/site/springvhfupsprints</a>
23	1900	23	2030	3.5	RSGB 80-Meter Club Championship, Data	Dig	RST, serial	<a href="http://www.rsgbcc.org/hf">www.rsgbcc.org/hf</a>
25	0001	26	2359	28	10-10 International Spring Contest, Digital	Dig	Name, mbr or "0," SPC	<a href="http://www.ten-ten.org">www.ten-ten.org</a>
25	1200	26	1200	3.5-28	SP DX RTTY Contest	Dig	RST, 2-letter SP province or serial	<a href="http://pkrvq.org/strona,spdxrttyen.html">pkrvq.org/strona,spdxrttyen.html</a>
25	1300	26	1259	1.8-28	Helvetia Contest	CW Ph Dig	RS(T), 2-letter HB canton or serial	<a href="http://www.uska.ch">www.uska.ch</a>
25	1600	26	2159	7-28	Florida QSO Party	CW Ph	RS(T), county or SPC	<a href="http://floridaqsoparty.org/rules">floridaqsoparty.org/rules</a>
26	1700	26	2059	3.5-28	BARTG Sprint 75	Dig	Serial	<a href="http://bartg.org.uk">bartg.org.uk</a>
27	1300	28	0400	1.8-28	QCX Challenge	CW	RST, name, SPC, rig	<a href="http://qrp-labs.com/party.html">qrp-labs.com/party.html</a>
29	2000	29	2100	3.5	UKEICC 80-Meter Contest	CW	4-char grid square	<a href="http://ukeicc.com/80m-rules.php">ukeicc.com/80m-rules.php</a>

## Links Sent In

This was sent by Tom W8FIB

### [Boat load of R-390A Receivers](#)

From Tom W9QN

THIS IS HAM RADIO " 1970 ARRL Promo Film

<https://www.youtube.com/watch?v=v6-ydrdTPhM>

The perfect companion for members on the go! Includes current and back issues of *On the Air* magazine and *QST*, ARRL's monthly membership journal. Stay up to date on the latest happenings and features right from your mobile device. The **ARRL Magazines App** is available free for download in Apple's [App Store](#) and [Google Play](#), or visit [www.arrl.org/ota](http://www.arrl.org/ota) for more info.

## DAYTON HAMVENTION QSO PARTY

Let's celebrate the many years we have all had at the Great Gathering we call Hamvention. We also want to remember Ron Moorefield W8ILC who never missed a Hamvention and contributed to our club until his recent death. Let's light up the airwaves with our remembrances of Hamventions of the past! See you on the air! K3LR, Tim Duffy and W8CI, Michael Kalter.

Here is the deal: 12-hour event, 8 a.m. to 8 p.m. EDST on Saturday of Hamvention May 16,

2020. Operate CW or SSB on 160, 80, 40, 20, 15 and 10 meters. The exchange is a signal report and first year you attended Hamvention. If you have never attended Hamvention you send 2020.

Send your score (number of QSOs) to 3830scores.com within 5 days of the event. You can print a certificate on line via [www.HVQP.org](http://www.HVQP.org). More details will appear on the Hamvention QSO Party web site being set up now.

Special bonus: W8BI, the club call of the Dayton Amateur Radio Association (DARA is the host of Hamvention) will be activated by designated DARA members from their home stations. You can add 10 points for each band/mode QSO with W8BI (12 available). So you can earn 120 bonus points (like having 120 additional QSOs).

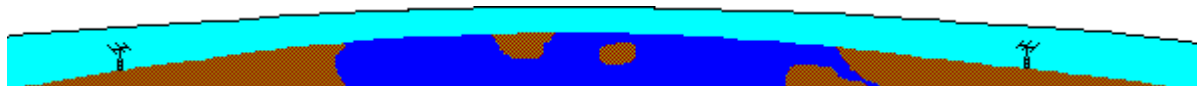
Visit: [https://clicks.aweber.com/y/ct/?l=ELXKD&m=i2D06S690v08Pns&b=pkdp\\_r807bboxNJFnSiyKkA](https://clicks.aweber.com/y/ct/?l=ELXKD&m=i2D06S690v08Pns&b=pkdp_r807bboxNJFnSiyKkA) for the most details for this event

300 Industrial Park Rd  
Starkville Mississippi 39759  
USA



If you have ham items for sale, email me a list along with prices and contact information. I will put it in the next newsletter.

I want to thank those that have been sending in articles for the newsletter. All items are appreciated.



Until Next Time,

73

*John*

W3ML

<http://nwidclub.weebly.com/>



**DX**

